



and

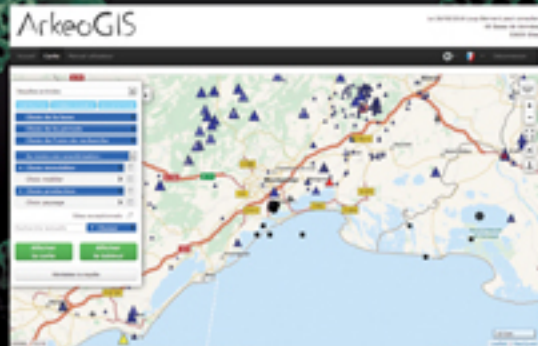
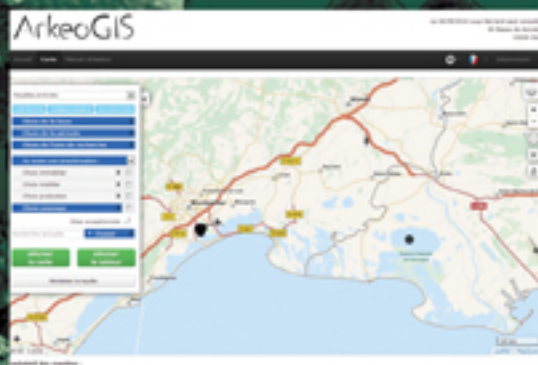
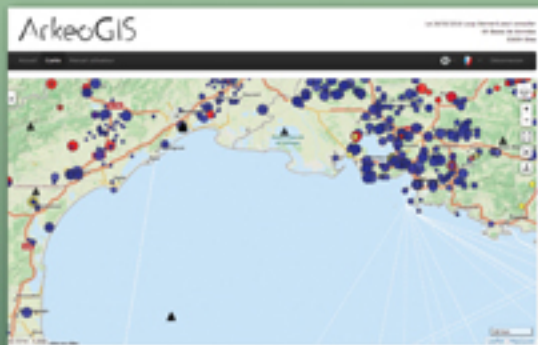
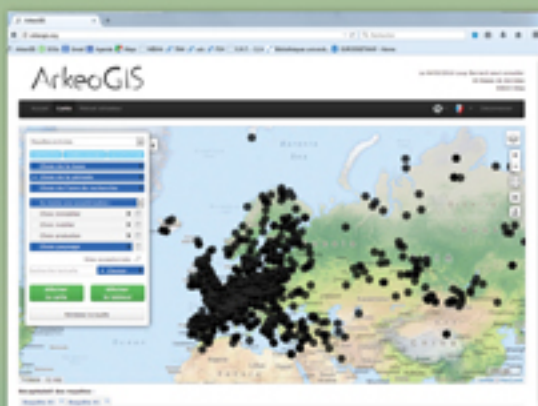
# ArkeoGIS

**DATA EXCHANGE AND IMPLEMENTATION  
BETWEEN ARCHAEOLOGY AND PALYNOLOGY**

For two years now, the European Database and ArkeoGIS exchange data. Both programs link data online, in open and free online solutions.

This partnership is of great help in multiple ways:

## ArkeoGIS printscreens



Archaeologists are aware of the existence of palynologic studies around their sites.

Archaeologists have links to taxa and publications they would probably not have found.

14C related data and depth data are very appreciated and used. Palynologists have access to archaeological data.

Palynologists have access to other existing palaeoenvironmental analysis (treerings, 14C, soil analysis, marine level 14C etc..) and to literature and online projects that they might use.

Finally, the tools work good together; it also makes it easy to implement each dataset.

New experiences in ABM (AMENOPHYS, AMEDEES) and modeling are led, using all the data available in ArkeoGIS; further developments are ongoing with INDEXMED, for example.

The mapping of those data has a good effect in implementing collaborative work.

All data from the European Database implemented in ArkeoGIS

Archaeologists query: which pollen descriptions (black triangles) are available in the surrounding of mediterranean Iron Age settlements (blue dots) ?

Environmentalist query: are there other analysis (black squares) surrounding the pollen taxa (black dots) in the Vosges or the Black Forest ?

European pollen datasets available between Agde and Fos

Surrounding information in ArkeoGIS: MedMax, radiocarbon dated Relative Sea-Level (RSL) samples (black dots), Iron Age settlements (blue triangles)

Loup BERNARD  
UNIVERSITÉ DE STRASBOURG  
loup.bernard@unistra.fr

Join the community  
arkeogis.org

