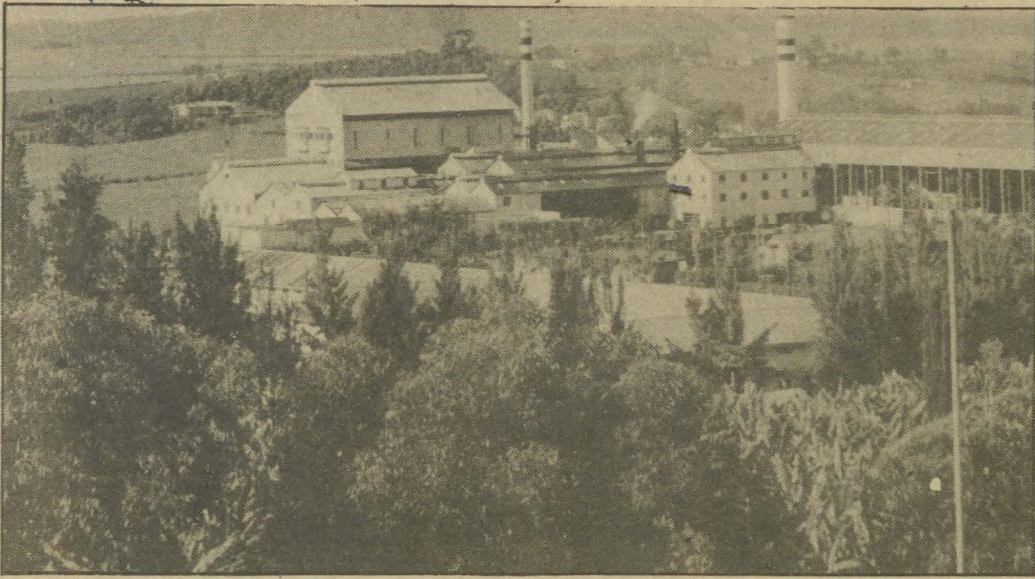


FOCUS ON UGANDA



Madhvani sugar factory at Kakira in its heyday: Plans are now in top gear to revive it to its former glory.

Sugar firm all set to recoup the lost years

The Kakira Sugar Complex was conceived and developed by the Madhvani Group between 1924 and 1970. It includes a large nucleus estate with around 20,000 acres developed for sugarcane and is ideally located on the shores of Lake Victoria, 18km from Jinja.

It has fertile soils and favourable climatic conditions. The sugarcane estate has its own railway system for cane transport and a network of about 200km of in-field roads. Over 7,000 acres

of the cane area had been brought under sprinkler irrigation.

The factory was developed to crush 3,000 tonnes of cane per day. In 1970, Kakira produced over 83,000 tonnes of sugar. The complex includes a confectionaries plant which can manufacture a variety of sweets.

In 1970, Kakira employed around 7,000 workers and had extensive housing and infrastructure facilities (schools, a 100 bed hospital, cinema, sports stadium, a guest house).

The Madhvani Group was forced to leave Uganda in 1972. Since then, production declined steadily and most assets suffered from lack of maintenance and vandalism.

The Government of Uganda and East African Holdings Ltd (EAHL) representing the Madhvani Group entered into a joint venture agreement on March 12, 1985 under which a new company - Kakira Sugar Works (1985) Limited - was formed to rehabilitate and operate the complex.

Based on various studies done on Kakira, the management of a new company has drawn up a development plan for Kakira which covers:

- Reclaiming and redeveloping the entire nucleus estate of 7,935 hectares cane plantation.

- Developing an outgrowers area of around 4,000 hectares for small farmers supply of cane.

- Rehabilitation of the existing factory equipment and facilities in two phases:

- Rehabilitation and provi-

sion of housing, infrastructure and social facilities to adequately serve around 7,000 workers.

Until the financial arrangements are finalised, in accordance with the joint venture agreement, the government has been releasing funds to the firm to meet essential operating expenses.

As the sugar factory has been inoperational since early 1984, the firm has no other sources of funds except from small revenue income generated from the sale of jaggery and sweets.

The company is grateful to the government for its financial support as well as the co-operation and assistance received from its various ministries.

For phase I, funds have been earmarked from within the financial resources available to the Government.

- Special drawing rights (SDR) to the tune of 3.0 million from the Agricultural Rehabilitation Programme Credit have been made available for refurbishing, shipment and installation of the Reggiane equipment.

- SDR 2.84 million has been given by the Uganda Development Bank under the Industrial Rehabilitation Credit for other factory, agricultural and infrastructural requirements essential for Phase I.

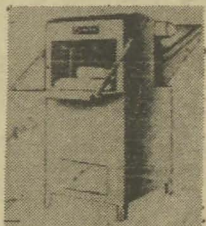
- SDR 0.33 million has been given by the Technical Assistance Credit for Specialised Consultancy Services.

As cane planted at Kakira takes 18-20 months to ma-

TURN TO PAGE 15

COMPLETE BREAD MAKING PLANT

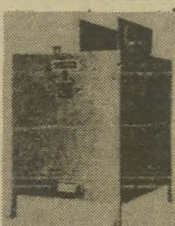
Available Ex-Stock on Turn Key Basis



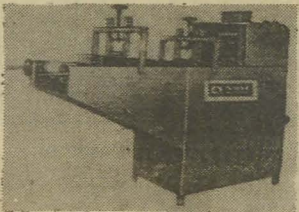
BREAD SLICER MACHINE



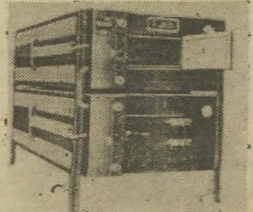
FLOUR KNEADING MACHINE



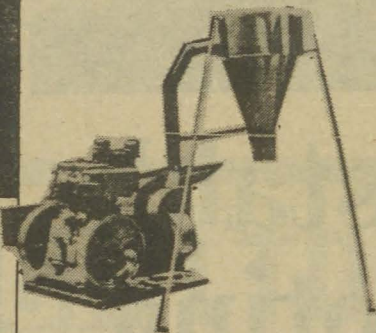
WRAPPING MACHINE



DOUGH MOULDING MACHINE



INDUSTRIAL OVEN



POSHO MILL
SLOW SPEED
WATER COOLED
ENGINE

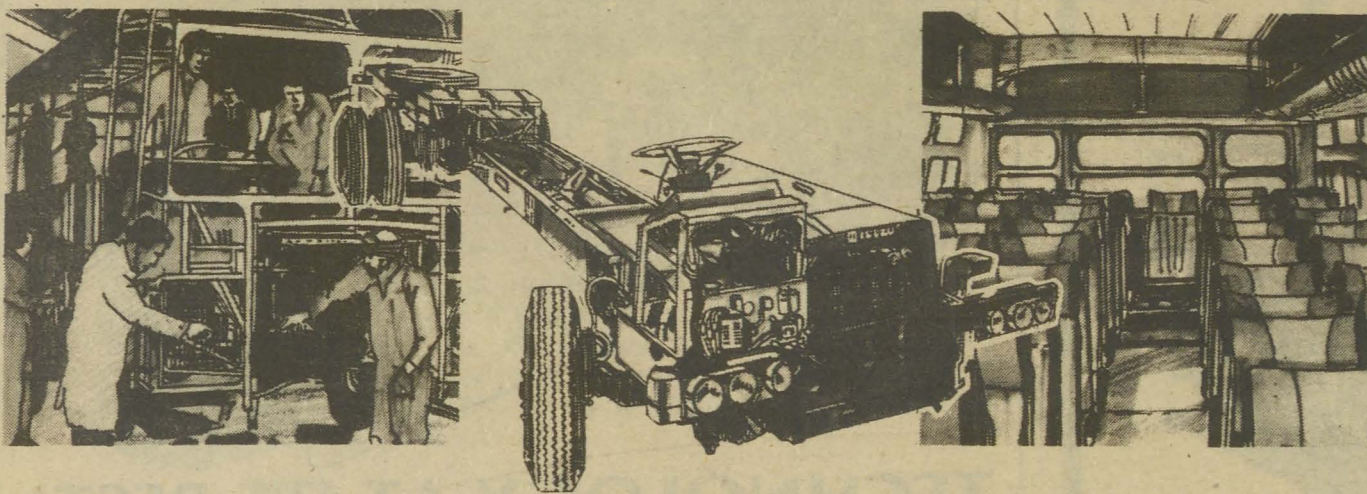
POSHO MILL
ELECTRIC MOTOR
Also available

ENGINE				MILL TYPE	PRODUCTION
BRAND	SIMILAR TO	H.P.	R.P.M.		PER HOUR
ANIL	LISTER	8	850	KAM 35 HD	3-4 BAGS
ANIL	PETTER	8	1800	KAM 25 HD	3-4 BAGS
ANIL	LISTER	10	1000	KAM 35 HD	5-6 BAGS
ANIL	LISTER	16	850	KAM 35 HD	7-8 BAGS
FOLKSTONE	BLACKSTONE	26	700	KAM 45 HD	10-12 BAGS

ABOVE PRODUCTION WITH 1/16" SCREEN
PRICE INCLUDES - BASEPLATE, GUARD, PULLEYS,
VEE BELTS, SCREEN, FOUNDATION BOLTS,
TOOL BOX, WORKSHOP MANUAL, TANK,
TRANSPORT AND INSTALLATION ON SITE

KAMSONS LIMITED

P.O. Box 49615, Nairobi, Kenya - Telephone: 541115/541116
Telex: 24143 NAIROBI - FAX 544076



The leading body-builders

A claim we rightfully make and proudly uphold. And it's not surprising when we have been building our reputation for over thirty five years. Our engineering capabilities can cope with any body-building design that you require. Contact us for more details



LABH SINGH HARNAM SINGH LIMITED
BUILDERS OF BUSES, COACHES AND COMMERCIAL VEHICLES
ATHI RIVER ROAD (OFF ADDIS ABABA ROAD), PO BOX 45569, NAIROBI, KENYA. PHONE 540636/7, 541879, 553293



Workers cutting sugar cane on the group's estate before the rot set in and ruined the company.